



Product Information

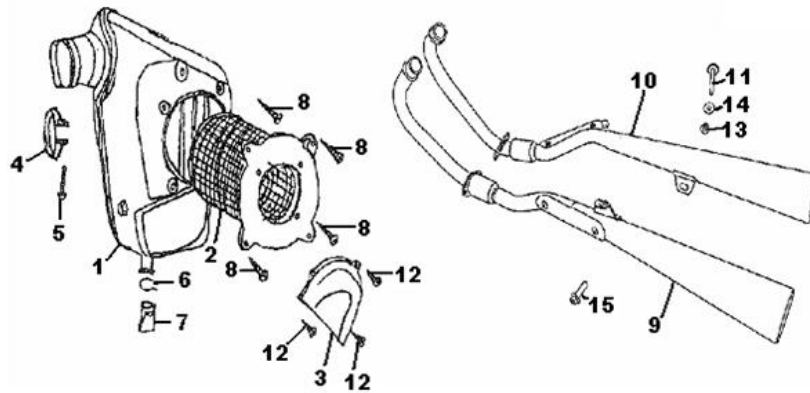
Baja Web > Product Information > Parts Lists > MOTORCYCLE > PX250S Hensim Phoenix 250cc motorcycle (VIN PREFIX LUAH)

PX250S Hensim Phoenix 250cc motorcycle (VIN PREFIX LUAH)

PX250S Hensim Phoenix 250cc motorcycle (VIN PREFIX LUAH)



Air Cleaner [Image]

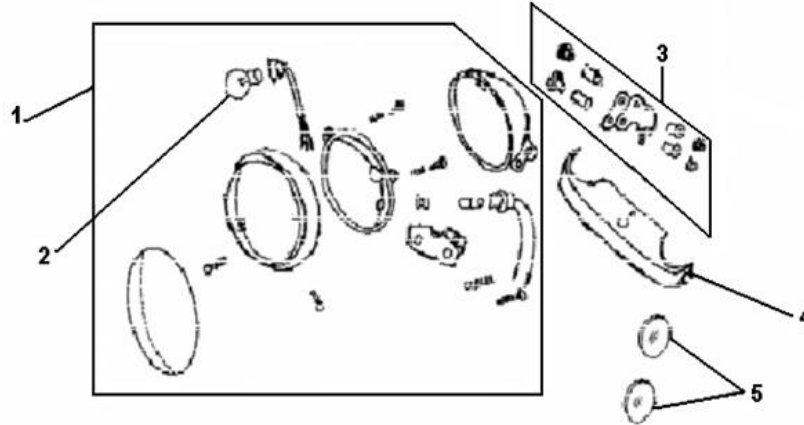


Air Cleaner

Item No	Part Number	Description	Qty
001	PX250S-100	CASE COMP AIR	1
002	PX250S-101	AIR FILTER	1
003	PX250S-102	DUST COVER IR	1
004	PX250S-103	CLIP	2
005	PX250S-104	BOLT, FLANGE	2
006	PX250S-105	TUBE AIR CLEANER CONNECTING	1
007	PX250S-106	DUCT, AIR CLEANER	1
008	PX250S-107	SCREW ST4.8?20	4
009	PX250S-108	MUFFLER, LEFT	1

010	PX250S-109	MUFFLER, RIGHT	1
011	PX250S-110	BOLT M8*40	1
012	PX250S-111	SCREW ST4.8*16	3
013	PX250S-112	NUT M8	1
014	PX250S-113	WASHER F8	1
015	PX250S-114	BOLT M10*1.5*20	1

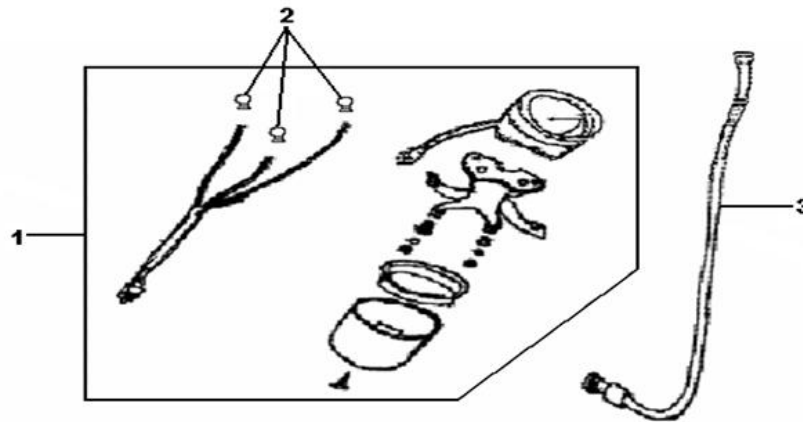
Headlight [Image]



Headlight

Item No	Part Number	Description	Qty
001	PX250S-115	HEADLIGHT CASE	1
002	PX250S-116	BULB	1
003	PX250S-118	BRACKET, HEADLIGHT	1
004	PX250S-120	DECORATING COVER, FRONT SUSPENSION	1
005	PX250S-125	SIDE REFLECTION	2

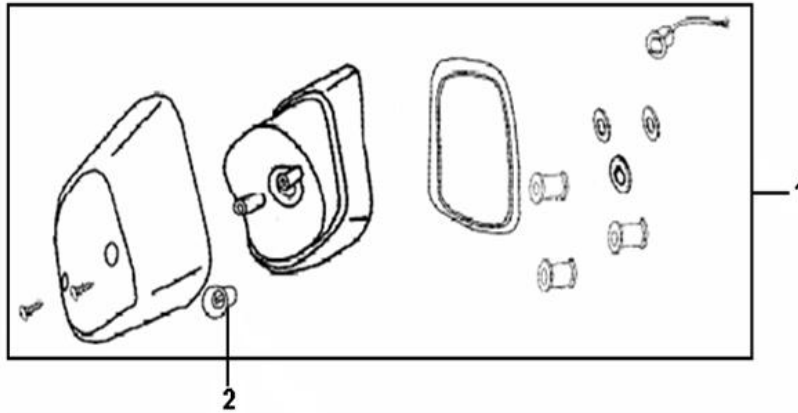
Speedometer [Image]



Speedometer

Item No	Part Number	Description	Qty
001	PX250S-126	SPEEDOMETER	1
002	PX250S-133	BULB 2	1
003	PX250S-136	ODOMETER CABLE	1

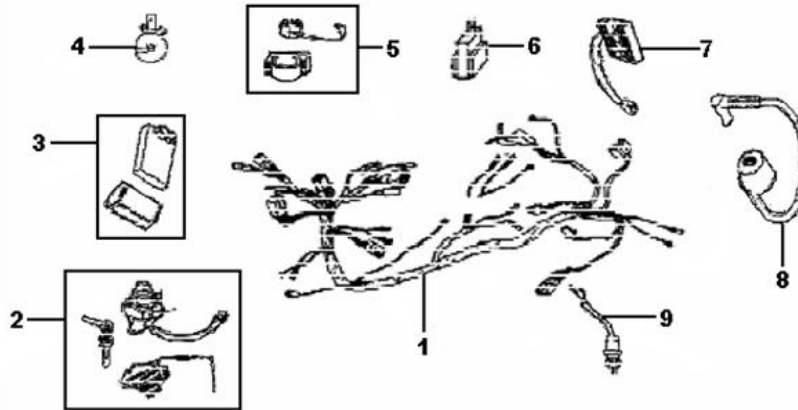
Taillight [Image]



Taillight

Item No	Part Number	Description	Qty
001	PX250S-591	RR.CASE, TAIL LIGHT	1
002	PX250S-144	BULB, TAIL LIGHT	1

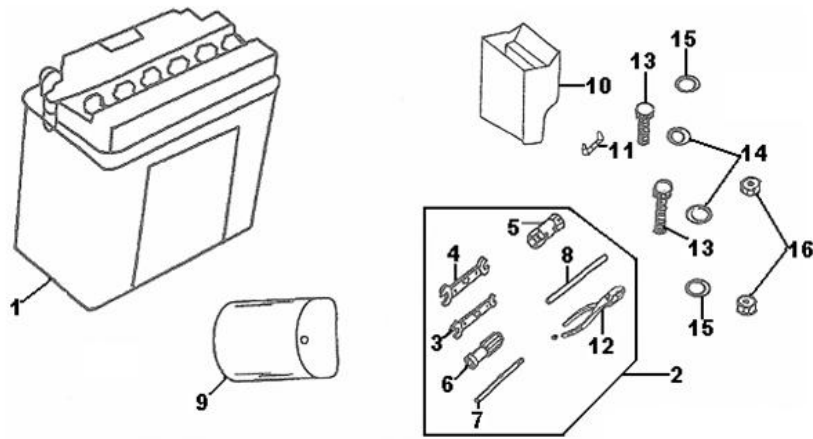
Electrical [Image]



Electrical

Item No	Part Number	Description	Qty
001	PX250S-145	HARNES	1
002	PX250S-152	LOCK COMP	1
003	PX250S-151	CDI	1
004	PX250S-146	HORN	1
005	PX250S-148	STARTING RELAY	1
006	PX250S-159	FLASHER	1
007	PX250S-154	RECTIFIER	1
008	PX250S-158	IGNITION COIL ASSY	1
009	PX250S-157	SWITCH, RR.BRAKE	1

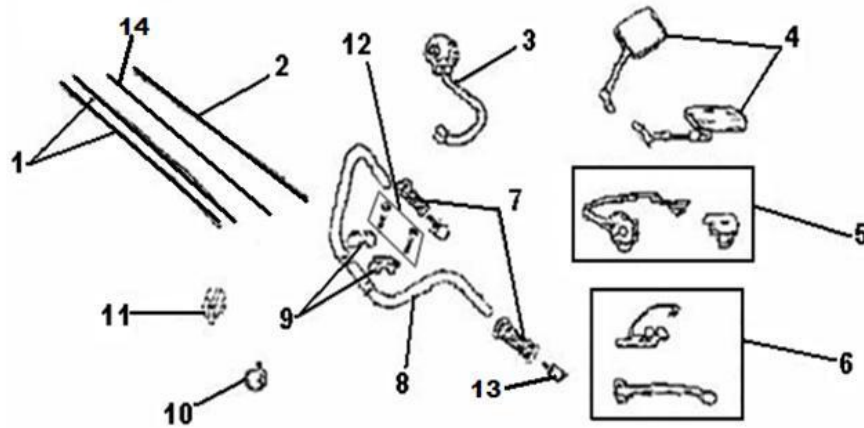
Battery [Image]



Battery

Item No	Part Number	Description	Qty
001	90-01-9003	BATTERY (YTX9-BS-FP)	1
002	PX250S-161	TOOL SET	1
010	PX250S-163	TOOL BOX	1
011	PX250S-164	BATTERY STAND	1
013	PX250S-165	BOLT 6?16	2
014	PX250S-166	PLAIN WASHER 6?12	2
015	PX250S-167	LOCK WASHER M6	2
016	PX250S-168	NUT M6	2

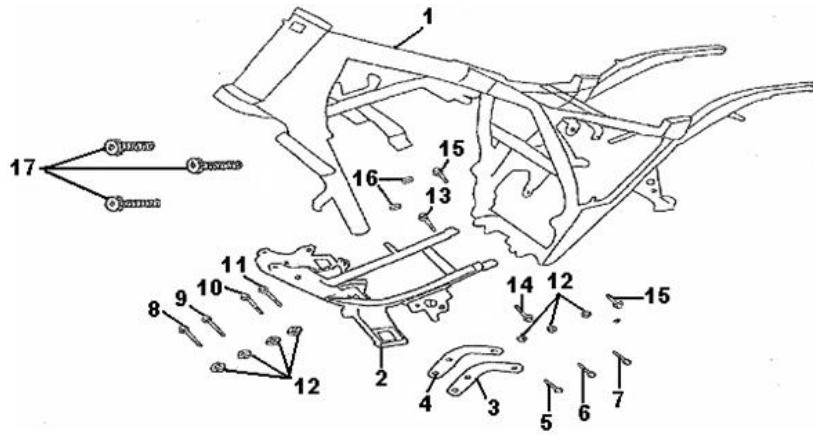
Handlebar [Image]



Handlebar

Item No	Part Number	Description	Qty
001	PX250S-176	CABLE, THROTTLE	1
002	PX250S-177	CABLE, CLUTCH	1
003	PX250S-175	SWITCH, RIGHT HANDLE	1
004	PX250S-169	MIRROR, LEFT	1
005	PX250S-174	SWITCH, LEFT HANDLE	1
006	PX250S-180	LEVER, CLUTCH	1
007	PX250S-183	GRIP,L.HANDLE BAR	1
007	PX250S-173	RUBBER SLEEVE, R.HANDLE BAR	1
008	PX250S-184	HANDLEBAR	1
009	PX250S-171	HOLDER, HANDLE BAR	2
010	PX250S-179	CLIP	4
011	PX250S-187	CLUTCH CABLE CLAMP	1
012	PX250S-172	SCREW M8?30	4
013	PX250S-190	CABLE, CHOKE	1
014	PX250S-603	HANDLEBAR END CAPS	2

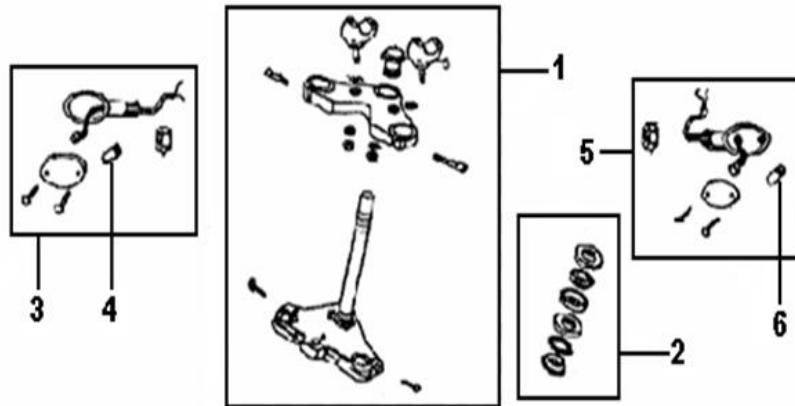
Frame [Image]



Frame

Item No	Part Number	Description	Qty
001	PX250S-191	FRAME	1
002	PX250S-192	MOUNTING PLATE	1
003	PX250S-193	L.UPPER MOUNTING PLATE, ENGINE	1
004	PX250S-194	R.UPPER MOUNTING PLATE, ENGINE	1
005	PX250S-195	BOLT A	1
006	PX250S-196	BOLT B	1
007	PX250S-197	BOLT C	1
008	PX250S-198	BOLT A	1
009	PX250S-199	BOLT B	1
010	PX250S-200	BOLT C	1
011	PX250S-201	BOLT D	1
012	PX250S-202	NUT M8	7
013	PX250S-203	BOLT A	1
014	PX250S-204	BOLT B	1
015	PX250S-205	FLANGE BOLT 8?20	2
016	PX250S-206	NUT M10?1.25	2
017	PX250S-207	PLANGE BOLT 6?16	3

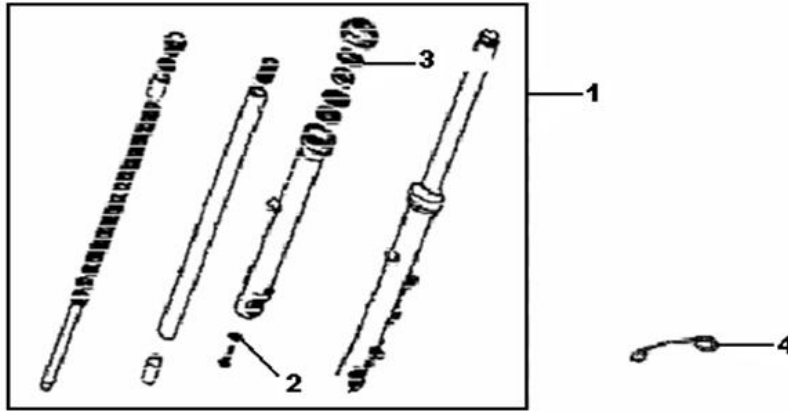
Steering Stem [Image]



Steering Stem

Item No	Part Number	Description	Qty
001	PX250S-213	STEERING STEM ASSY	1
002	PX250S-214	UPPER CIRCLIP,BEARING	1
003	PX250S-233	URNSIGNAL, FRONT RIGHT	1
004	PX250S-234	BULB,URNSIGNAL	2
005	PX250S-232	URNSIGNAL , FRONT LEFT	1
006	PX250S-234	BULB,URNSIGNAL	2

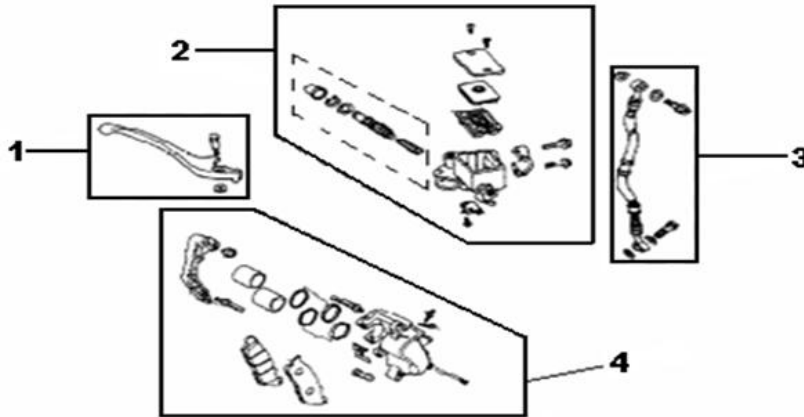
Front Shocks [Image]



Front Shocks

Item No	Part Number	Description	Qty
001	PX250S-236	L.FRONT SHOCK ABSORBER ASSY	1
001	PX250S-237	R.FRONT SHOCK ABSORBER ASSY	1
004	PX250S-240	GUIDE CABLE S/METER	1

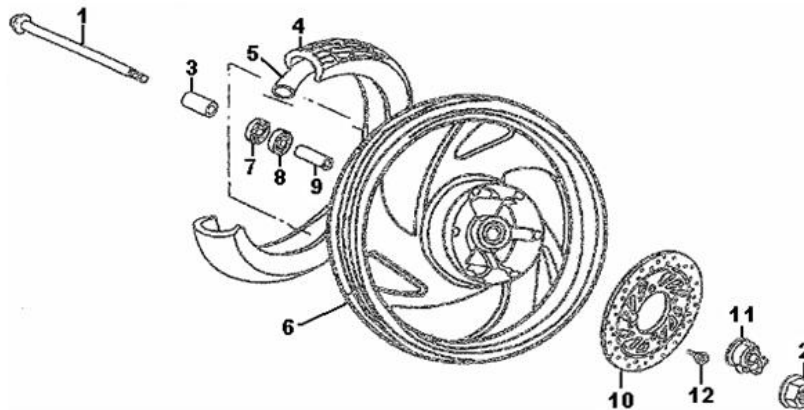
Front Brake [Image]



Front Brake

Item No	Part Number	Description	Qty
001	PX250S-244	FRONT BRAKE HANDLE	1
002	PX250S-242	BRAKE OIL PUMP	1
003	PX250S-243	BRAKE HOSE COMP	1
004	PX250S-250	CALIPER ASSY FR.	1

Front Rim [Image]

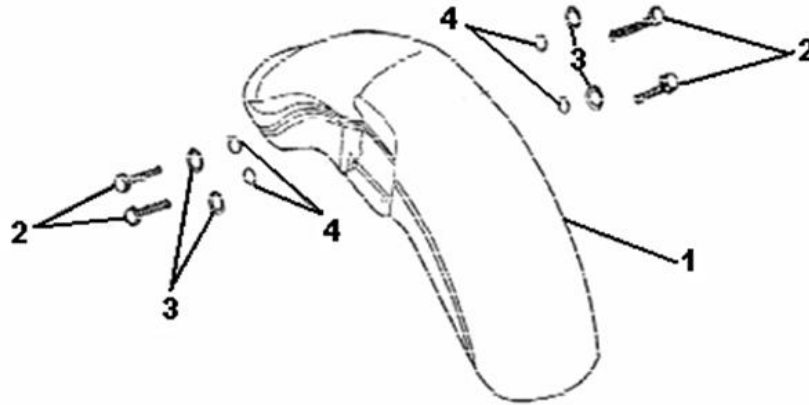


Front Rim

Item No	Part Number	Description	Qty
001	PX250S-253	AXLE, FRONT	1

002	PX250S-254	NUT M14?1.5	1
003	PX250S-255	BUSHING, FRONT WHEEL	1
004	PX250S-256	TIRE, FRONT (110/90-16)	1
005	PX250S-257	TUBE, FRONT	1
006	PX250S-258	RIM, FRONT 2.5X16	1
007	PX250S-259	OIL SEAL	1
008	PX250S-260	BEARING 6302	2
009	PX250S-261	SPACER	1
010	PX250S-262	DISK, FRONT BRAKE	1
011	PX250S-263	SENSOR	1
012	PX250S-264	BOLT M8?16	6

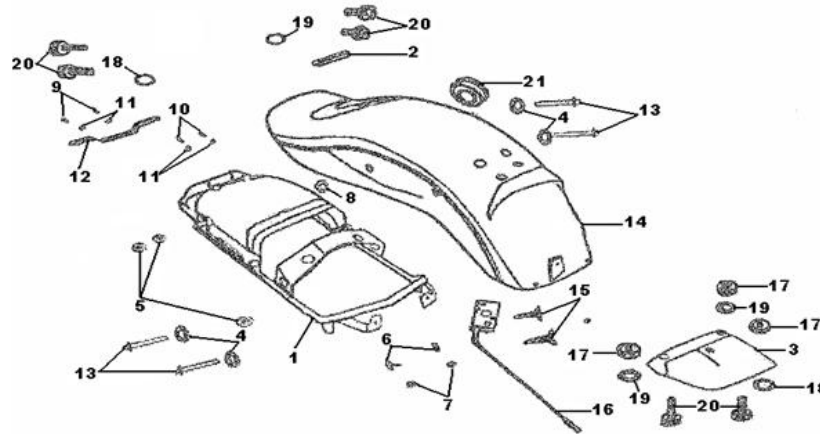
Front Fender [Image]



Front Fender

Item No	Part Number	Description	Qty
001	PX250S-265	FRONT FENDER	1
002	PX250S-270	BOLT 6?12	4
003	PX250S-271	PLAIN 6?12	4
004	PX250S-266	LOCK WASHER M6	4

Rear Fender [Image]

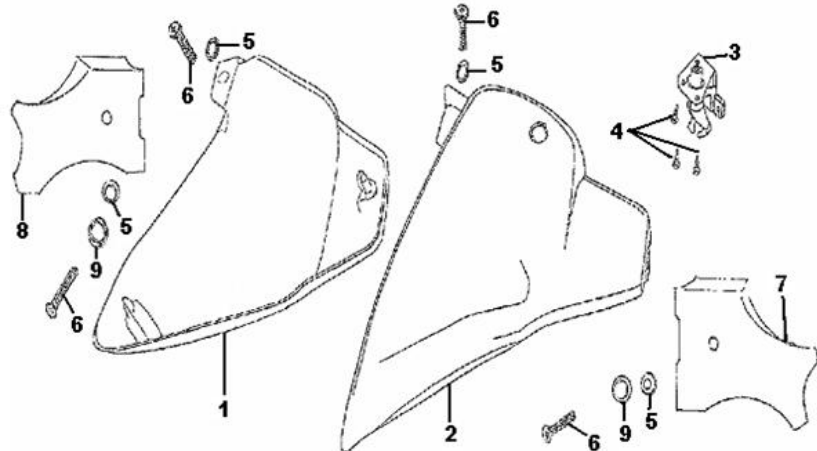


Rear Fender

Item No	Part Number	Description	Qty
001	PX250S-272	BRACKET, REAR FENDER	1
002	PX250S-273	REAR REFLECTOR	1
003	PX250S-274	TAIL PLATE, REAR FENDER	1
004	PX250S-275	PLAIN WASHER 8?24	4
005	PX250S-276	RUBBER	4
006	PX250S-277	BOLT M6?16	2
007	PX250S-278	WASHER	4
008	PX250S-279	WASHER	1
009	PX250S-280	BOLT M6?16	2
010	PX250S-281	NUT M6	4
011	PX250S-282	WASHER 6	4

012	PX250S-283	REAR LICENCE BRACKET	1
013	PX250S-284	BOLT M8*65	4
014	PX250S-285	REAR FENDER	1
015	PX250S-286	SCREW 6*25	2
016	PX250S-287	SEAT CATCH W/CABLE	1
017	PX250S-288	NUT M6	3
018	PX250S-289	PLAIN WASHER 6*12	1
019	PX250S-290	PLAIN WASHER 6*18	6
020	PX250S-291	FLANGE BOLT 6*16	6
021	PX250S-292	CABLE HOLE RUBBER	1

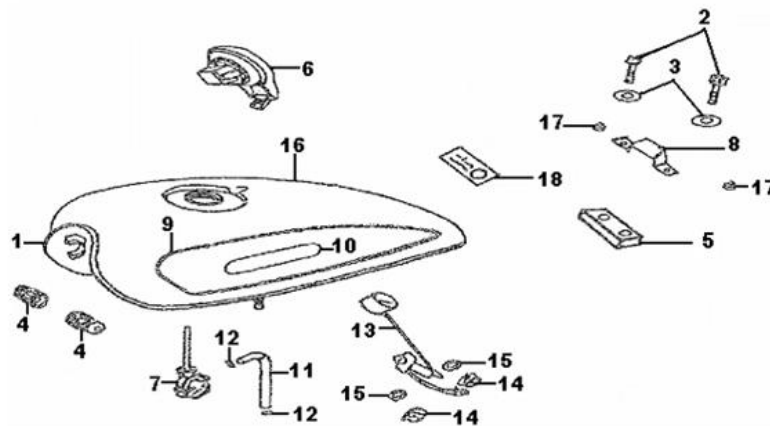
Body Covers [Image]



Body Covers

Item No	Part Number	Description	Qty
001	PX250S-293	LEFT SIDE COVER	1
002	PX250S-294	RIGHT SIDE COVER	1
004	PX250S-295	SCREW ST4.2*16	3
005	PX250S-296	RUBBER WASHER	4
006	PX250S-297	SCREW 6*17	4
007	PX250S-298	PROTECT BOARD, LEFT	1
008	PX250S-299	PROTECT BOARD, RIGHT	1
009	PX250S-300	PLAIN WASHER 6*18	2

Fuel Tank [Image]

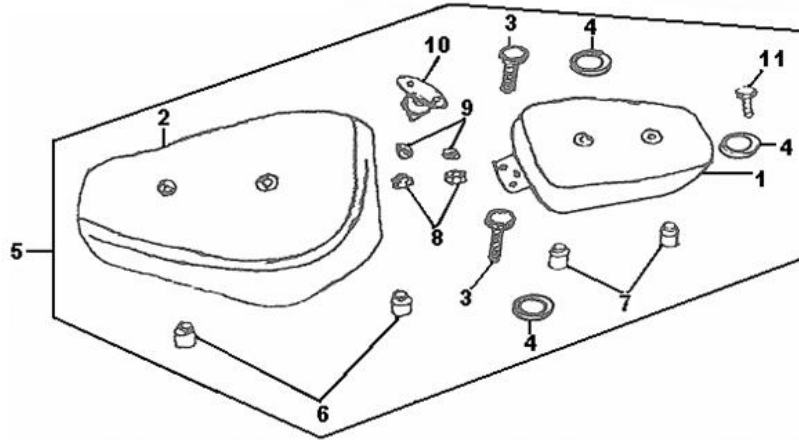


Fuel Tank

Item No	Part Number	Description	Qty
001	PX250S-301	FUEL TANK	1
002	PX250S-302	BOLT M6* 30	2
003	PX250S-303	WASHER 6	2
004	PX250S-304	RUBBER RING	2
005	PX250S-305	CUSHION	1
007	PX250S-306	FUEL COCK	1

008	PX250S-307	PRESSING SET, FUEL TANK	1
011	PX250S-311	OIL TUBE	1
012	PX250S-312	CLIP TUB	2
013	PX250S-313	FUEL LEVER SENSOR	1
014	PX250S-314	NUT M6	2
015	PX250S-315	WASHER 6	2
017	PX250S-317	CUSHION	2

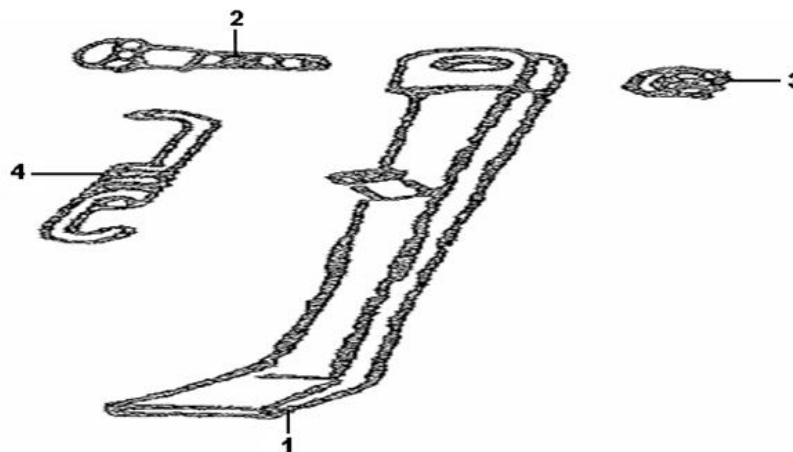
Seat [Image]



Seat

Item No	Part Number	Description	Qty
001	PX250S-319	VICE SEAT	1
002	PX250S-320	MAIN SEAT	1
003	PX250S-321	FLANGE BOLT 6? 16	2
004	PX250S-322	RUBBER WASHER RR.SEAT	3
006	PX250S-324	RUBBER	2
007	PX250S-325	RUBBER 1	2
008	PX250S-326	NUT M6	2
009	PX250S-327	WASHER 6	2
011	PX250S-329	BOLT M8? 20	1

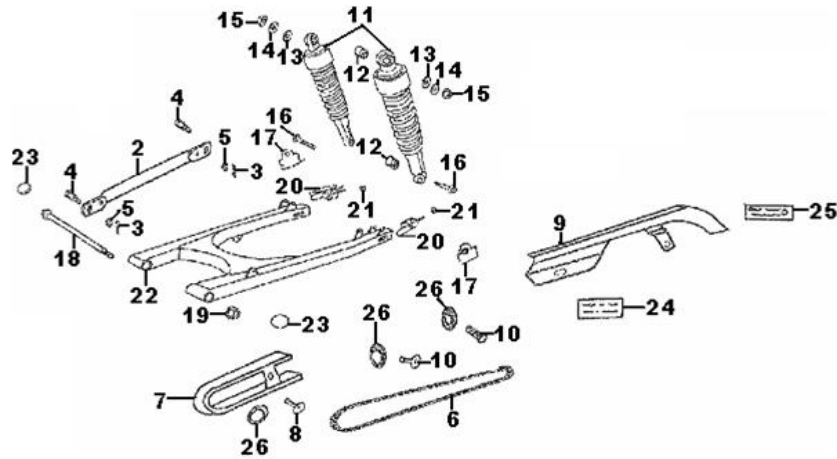
Kickstand [Image]



Kickstand

Item No	Part Number	Description	Qty
001	PX250S-330	SIDE STAND	1
002	PX250S-331	BOLT SIDE STAND	1
003	PX250S-332	NUT M10? 1.25	1
004	PX250S-333	SPRING SIDE STAND	1

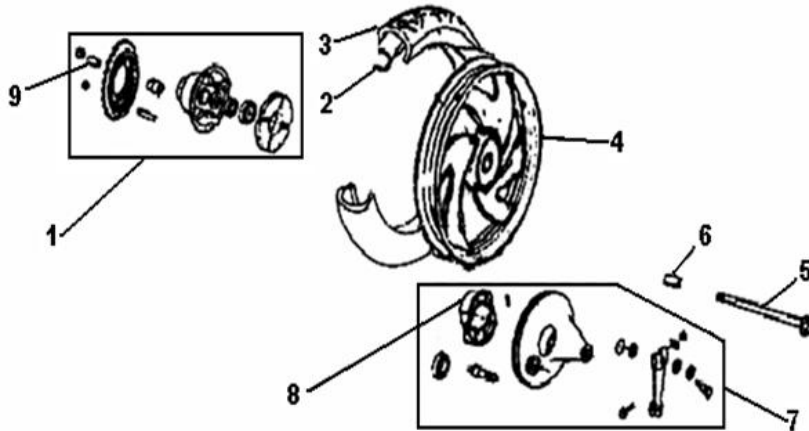
Rear Swing Arm [Image]



Rear Swing Arm

Item No	Part Number	Description	Qty
001	PX250S-334	SWING ARM	1
002	PX250S-335	POSITION ROD	1
003	PX250S-336	COTTER PIN 2? 20	2
004	PX250S-337	BOLT M10? 1.25-6G	2
005	PX250S-338	NUT M8	2
006	PX250S-339	CHAIN 428H? 132	1
007	PX250S-340	CLAMP	1
008	PX250S-341	BOLT M6? 16	1
009	PX250S-342	CHAIN CASE	1
010	PX250S-343	BOLT M6? 10	2
011	PX250S-344	REAR SHOCK ABSORBER	2
012	PX250S-345	BUSHING, REAR SHOCK	4
013	PX250S-346	WASHER 12	2
014	PX250S-347	WASHER 10	2
015	PX250S-348	NUT M10? 1.25	2
016	PX250S-349	BOLT M12? 1.25? 40	2
017	PX250S-350	GASKET, ADJUSTOR	2
018	PX250S-351	SHAFT, SWING ARM	1
019	PX250S-352	NUT M14? 1.25	1
020	PX250S-353	ADJUSTOR, CHAIN	2
021	PX250S-354	NUT M6	2
022	PX250S-355	SLEEVE, SHAFT	2
023	PX250S-356	WASHER 12	2
024	PX250S-357	DRIVE CHAIN STICKER	1
025	PX250S-358	TIRE INFORMATION STICKER	1
026	PX250S-359	PLAIN WASHER 6? 18	3

Rear Rim [Image]

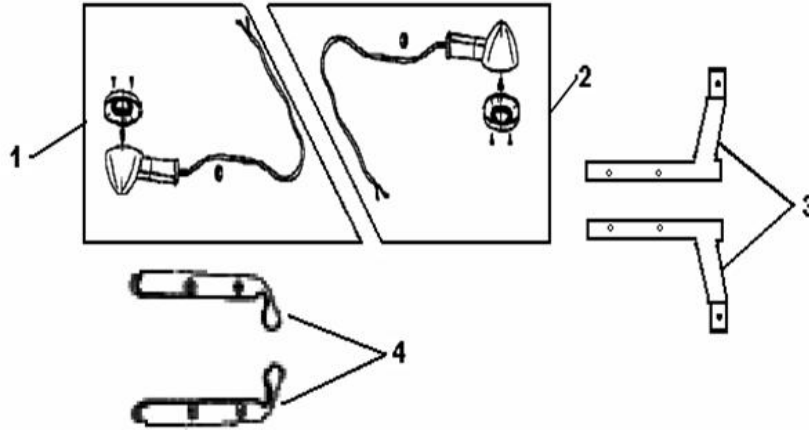


Rear Rim

Item No	Part Number	Description	Qty
---------	-------------	-------------	-----

001	PX250S-363	SPROCKET COMP	1
002	PX250S-365	TUBE, REAR	1
003	PX250S-364	TIRE, REAR 130/90-15	1
004	PX250S-366	RIM, REAR (3.0X15)	1
005	PX250S-360	REAR AXLE	1
006	PX250S-362	RIGHT BUSH RR.WHEEL	1
007	PX250S-378	COVER, REAR BRAKE	1
008	PX250S-382	BRAKE SHOE	2
009	PX250S-361	LEFT BUSH OF RR.WHEET	1

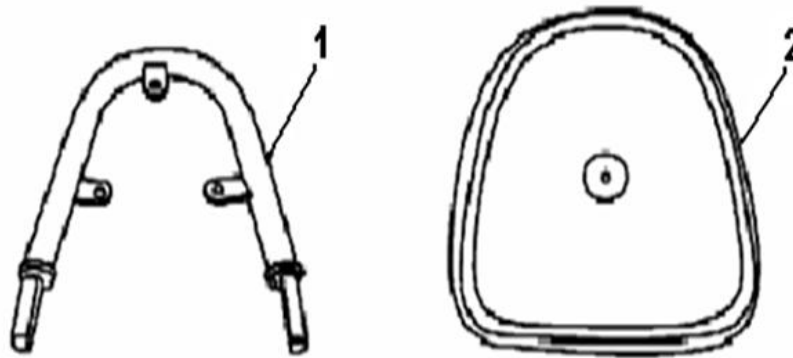
Turn Signals [Image]



Turn Signals

Item No	Part Number	Description	Qty
001	PX250S-394	LIGHT, REAR LEFT SIGNAL	1
002	PX250S-398	LIGHT, REAR RIGHT SIGNALL	1
003	PX250S-600	CABLE, REVERSE	2
004	PX250S-601	PROTECT PLATE, REAR FENDER	2

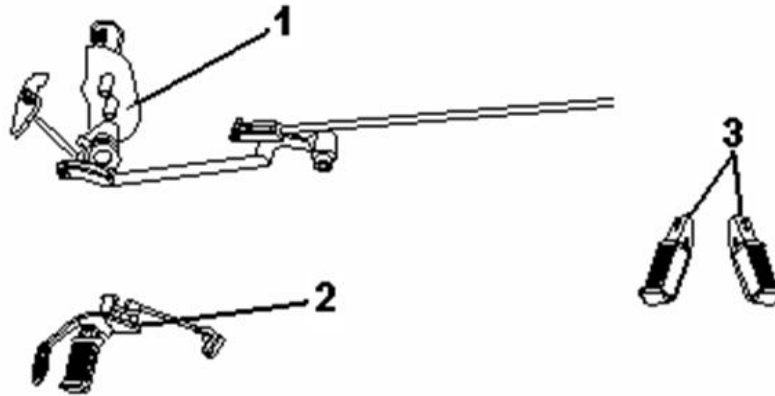
Backrest [Image]



Backrest

Item No	Part Number	Description	Qty
001	PX250S-404	BACK SEAT BRACKET	1
002	PX250S-405	BACK SEAT	1

Footrests [Image]



Footrests

Item No	Part Number	Description	Qty
001	PX250S-594	FOOTREST, RIGHT	1
002	PX250S-595	FOOTREST, LEFT	1
003	PX250S-596	FOOTREST, REAR	2

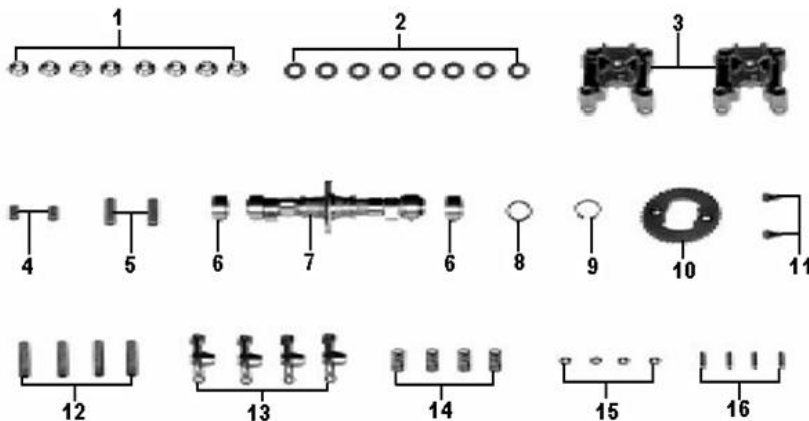
Cylinder Head Cover [Image]



Cylinder Head Cover

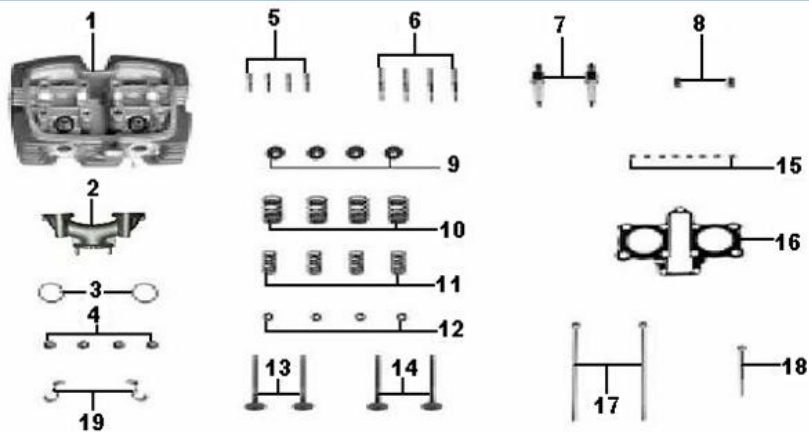
Item No	Part Number	Description	Qty
001	PX250S-407	LEFT DECORATIVE COVER, CYLINDER HEAD	1
002	PX250S-408	SCREW SIDE COVER, CYLINDER HEAD COVER	4
003	PX250S-409	CYLINDER HEAD COVER	1
004	PX250S-410	SCREW, CYLINDER HEAD COVER	2
005	PX250S-411	SEAL RING	1
006	PX250S-412	RIGHT DECORATIVE COVER, CYLINDER HEAD	1

Camshaft [Image]



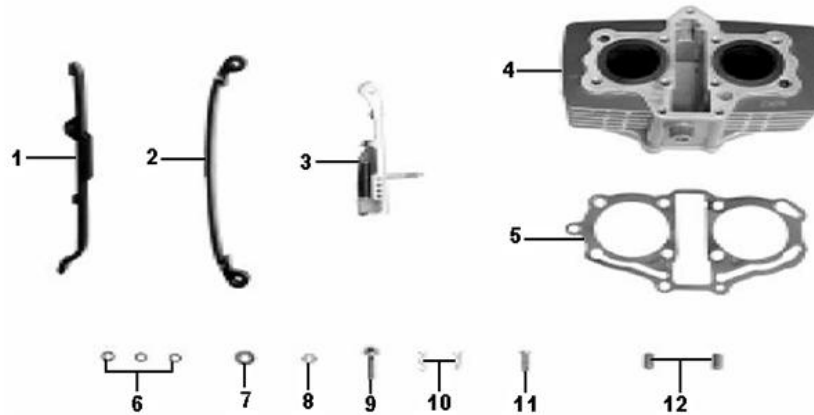
Camshaft

Item No	Part Number	Description	Qty
001	PX250S-413	NUT M8, CYLINDER HEAD	8
002	PX250S-414	WASHER 8.5? 2? 17.6, CAM HOLDER	8
003	PX250S-415	CAMSHAFT UPPER SEAT CAP	2
004	PX250S-416	DOWEL PIN 10? 16	2
005	PX250S-417	DOWEL PIN 10? 28	2
006	PX250S-418	BUSH PARTS, CAMSHAFT	2
007	PX250S-419	CAMSHAFT	1
008	PX250S-420	WASHER CAMSHAFT 20? 2? 27	1
009	PX250S-421	RETAINING RING, CAMSHAFT	1
010	PX250S-422	TIMING DRIVEN SPROCKET	1
011	PX250S-423	BOLT M7? 13, TIMING CHAIN WHEEL	2
012	PX250S-424	SWINGARM SHAFT, VAVLE	4
013	PX250S-425	VAVLE SWINGARM COMPONENT	4
014	PX250S-426	SPRING, SWINGARM SHAFT	4
015	PX250S-427	ADJUSTING NUT,VAVLE CLEARANCE	4
016	PX250S-428	ADJUSTING SCREW,VAVLE CLEARANCE	4

Cylinder Head [Image]**Cylinder Head**

Item No	Part Number	Description	Qty
001	PX250S-429	CYLINDER HEAD	1
002	PX250S-430	LEFT INTAKE PIPE	1
003	PX250S-432	O-RING 25.8?2.6	2
004	PX250S-433	NUT M6	4
005	PX250S-434	DOUBLE END BOLT M6? 28, INTAKE PIPE	4
006	PX250S-435	DOUBLE END BOLT M8? 42, VENT	4
007	PX250S-436	SPARK PLUG(NGK)	2
008	PX250S-437	DOWEL PIN 10? 14	2
009	PX250S-438	UPPER SPRING HOLDER, VALVE	4
010	PX250S-439	OUTER SPRING, VALVE	4
011	PX250S-440	INNER SPRING, VALVE	4
012	PX250S-441	OIL SPLASHER ASSY	4
013	PX250S-442	EXHAUST VALVE	2
014	PX250S-443	INTAKE VALVE	2
015	PX250S-444	VALVE CLIP	8
016	PX250S-445	GASKET ASSY, CYLINDER HEAD	1
017	PX250S-446	CONNECTING BOLT M6? 145	2
018	PX250S-447	CONNECTING BOLT M6 ? 65	1
019	PX250S-448	FIXING CLIP, HIGH VOLTAGE WIRE	2

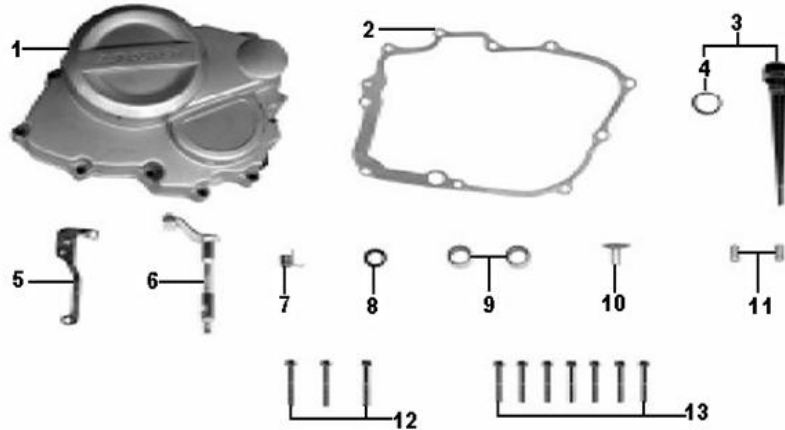
Cylinder [Image]



Cylinder

Item No	Part Number	Description	Qty
001	PX250S-449	CHAIN GUIDING PLATE COMPONENT	1
002	PX250S-450	TENSIONING PLATE COMPONENT,CHAIN	1
003	PX250S-451	TENSIONER COMPONENT	1
004	PX250S-452	CYLINDER PARTS	1
005	PX250S-453	GASKET, CYLINDER	1
006	PX250S-454	O- RING 6?1.8	3
007	PX250S-455	WASHER 6.2? 1.2? 16.5, TIGHTENER	1
008	PX250S-456	NUT M6	1
009	PX250S-457	BOLT M6? 25	1
010	PX250S-458	PIN, TIGHTEN PLATE	2
011	PX250S-459	FIXING PIN, TIGHTENER	1
012	PX250S-460	DOWEL PIN 8? 14	2

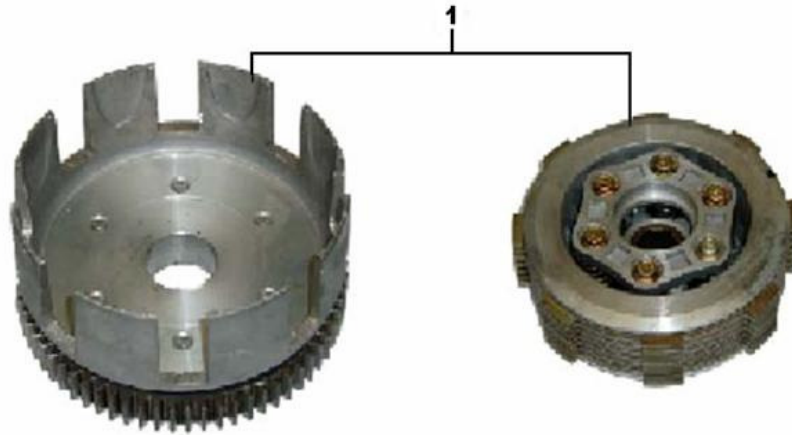
Right Crankcase Cover [Image]



Right Crankcase Cover

Item No	Part Number	Description	Qty
001	PX250S-461	RIGHT CRANKCASE COVER	1
002	PX250S-462	GASKET, RIGHT CRANKCASE COVER	1
003	PX250S-463	DIP STICK	1
004	PX250S-464	SEAL RING 18? 3	1
005	PX250S-465	BRACKET, CLUTCH CABLE	1
006	PX250S-466	OPERATING ARM, CLUTCH	1
007	PX250S-467	SPRING, OPERATING ARM, CLUTCH	1
008	PX250S-468	OIL SEAL 12? 18? 5, OPERATING ARM, CLUT	1
009	PX250S-469	NEEDLE BEARING (HK121610)	2
010	PX250S-470	PUSH ROD, CLUTCH	1
011	PX250S-471	DOWEL PIN 8? 14	2
012	PX250S-472	BOLT M6? 50	3
013	PX250S-473	BOLT M6? 40	7

Clutch [Image]



Clutch

Item No	Part Number	Description	Qty
001	PX250S-474	CLUTCH ASSEMBLY	1

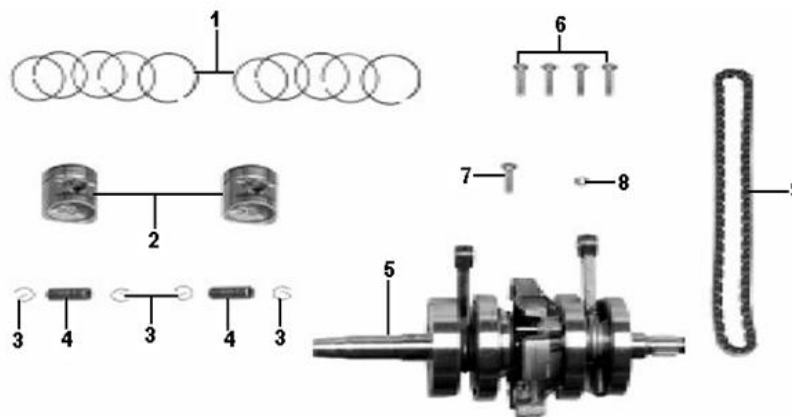
Oil Pump [Image]



Oil Pump

Item No	Part Number	Description	Qty
001	PX250S-492	OIL PUMP PARTS	1

Crankshaft [Image]

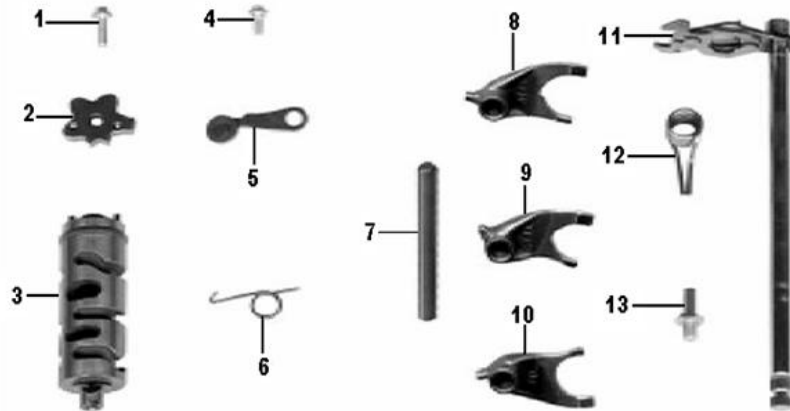


Crankshaft

Item No	Part Number	Description	Qty
001	PX250S-502	PISTON RING ASSEMBLY	2
002	PX250S-503	PISTON	2
003	PX250S-504	CHECK RING, PISTON PIN	4
004	PX250S-505	PISTON PIN	2
005	PX250S-506	CRANKSHAFT	1
006	PX250S-507	BOLT CRANKCASE M8? 35	4

007	PX250S-508	BOLT CRANKCASE M8? 30	1
008	PX250S-509	NUT M6	1
009	PX250S-510	TIMING CHAIN COMBINATION	1

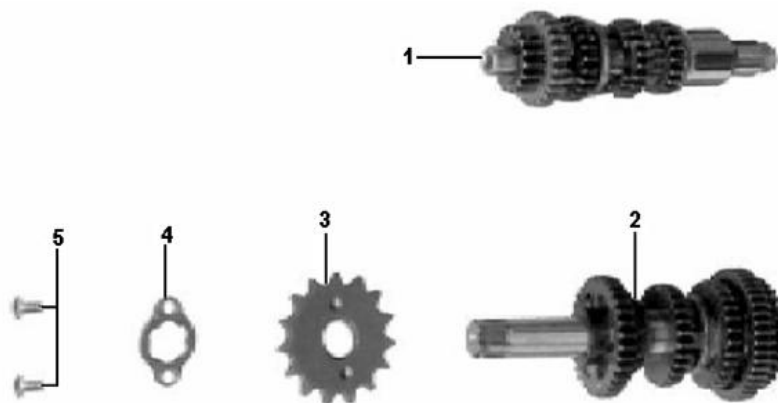
Gearshift Drum [Image]



Gearshift Drum

Item No	Part Number	Description	Qty
001	PX250S-511	BOLT M6? 20	1
002	PX250S-512	PENTACLE PLATE	1
003	PX250S-513	GEAR SHIFT DRUM	1
004	PX250S-514	BOLT M6? 14, POSITIONING BOARD	1
005	PX250S-515	POSITIONING BOARD COMPONENT	1
006	PX250S-516	SPRING, POSITIONING BOARD	1
007	PX250S-517	FORK SHAFT	1
008	PX250S-518	LEFT FORK, COUNTERSHAFT	1
009	PX250S-519	MAIN SHAFT FORK	1
010	PX250S-520	RIGHT FORK, COUNTERSHAFT	1
011	PX250S-521	GEAR SHIFT LEVER PARTS	1
012	PX250S-522	RETURNING SPRING, GEAR SHIFT	1
013	PX250S-523	BOLT M8? 11	1

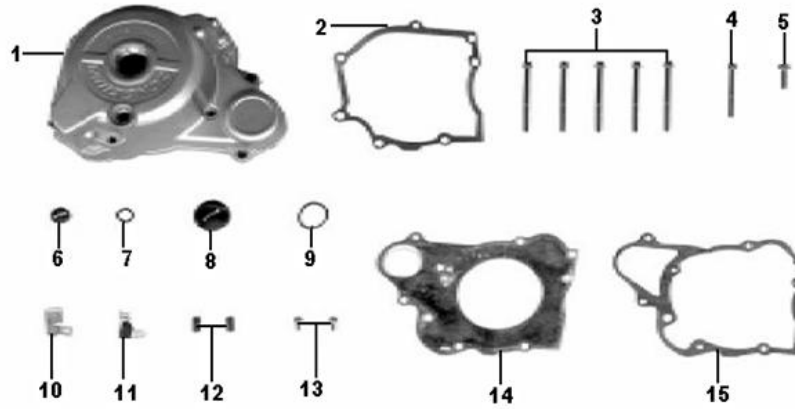
Transmission [Image]



Transmission

Item No	Part Number	Description	Qty
001	PX250S-524	MAIN SHAFT ASSEMBLY	1
002	PX250S-525	COUNTER SHAFT ASSEMBLY	1
003	PX250S-526	DRIVING SPROCKET(428.15)	1
004	PX250S-527	FIXING BOARD, DRIVING SPROCKET	1
005	PX250S-528	BOLT M6? 10	2

Left Crankcase Cover [Image]



Left Crankcase Cover

Item No	Part Number	Description	Qty
001	PX250S-529	COVER, LEFT CRANKCASE	1
002	PX250S-530	GASKET	1
003	PX250S-531	BOLT M6? 65	5
004	PX250S-532	BOLT M6? 50	1
005	PX250S-533	BOLT M6? 20	1
006	PX250S-534	SMALL INSPECTING HOLE	1
007	PX250S-535	SEAL RING 13.2?2.65	1
008	PX250S-536	BIG INSPECTING HOLE	1
009	PX250S-537	SEAL RING 27.4?2.65	1
010	PX250S-538	WIRE CLIP 2,MAGNETO	1
011	PX250S-539	WIRE CLIP 1,MAGNETO	1
012	PX250S-540	DOWEL PIN 8? 16	2
013	PX250S-541	SCREW M5? 10	2
014	PX250S-542	OIL ISOLATING BOARD	1
015	PX250S-543	GASKET, LEFT CRANKCASE COVER	1

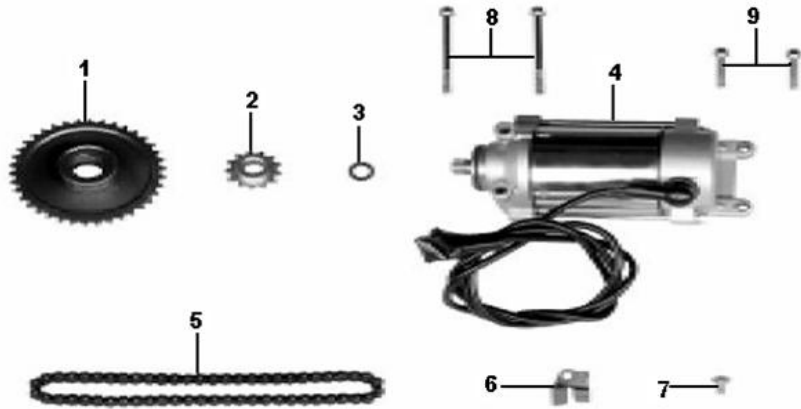
Magneto [Image]



Magneto

Item No	Part Number	Description	Qty
001	PX250S-544	FLYWHEEL	1
002	PX250S-545	BOLT M10? 32.5	1
003	PX250S-546	SENSOR	1
004	PX250S-547	STATOR	1
005	PX250S-548	SCREW M6? 20	2
006	PX250S-549	BOLT M5? 30	3

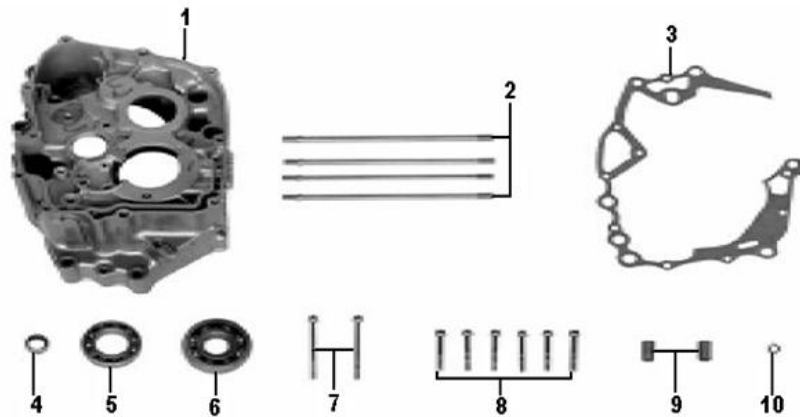
Starter Motor [Image]



Starter Motor

Item No	Part Number	Description	Qty
001	PX250S-550	STARTING SPROCKET COMPONENT	1
002	PX250S-551	SMALL SPROCKET WHEEL, STARTING MOTOR	1
003	PX250S-552	OIL SEAL 31? 22? 5	1
004	PX250S-553	STARTER MOTOR	1
005	PX250S-554	STARTING CHAIN COMPONENT	1
006	PX250S-555	POSITIONING PLATE, STARTING SPROCKET WH	1
007	PX250S-556	BOLT M6 ? 10	1
008	PX250S-557	BOLT M6 ? 65	2
009	PX250S-558	BOLT M6 ? 25	2

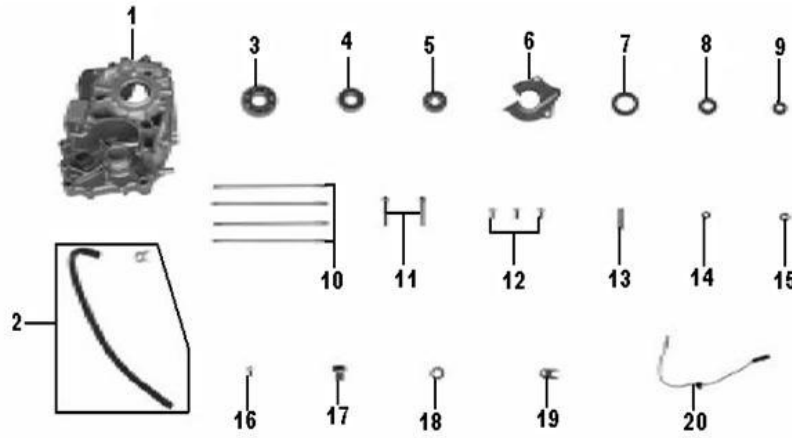
Right Crankcase [Image]



Right Crankcase

Item No	Part Number	Description	Qty
001	PX250S-559	RIGHT CRANKCASE COMPONENT	1
002	PX250S-560	STUD, CYLINDER A M8? 212	4
003	PX250S-561	GASKET	1
004	PX250S-562	NEEDLE BEARING (NK152312)	1
005	PX250S-563	BEARING(6006)	1
006	PX250S-564	BEARING(6305/P5CS16)	1
007	PX250S-565	BOLT M6? 65	2
008	PX250S-566	BOLT M6? 40	6
009	PX250S-567	DOWEL PIN 10? 20	2
010	PX250S-568	WASHER 6.5? 1? 12	1

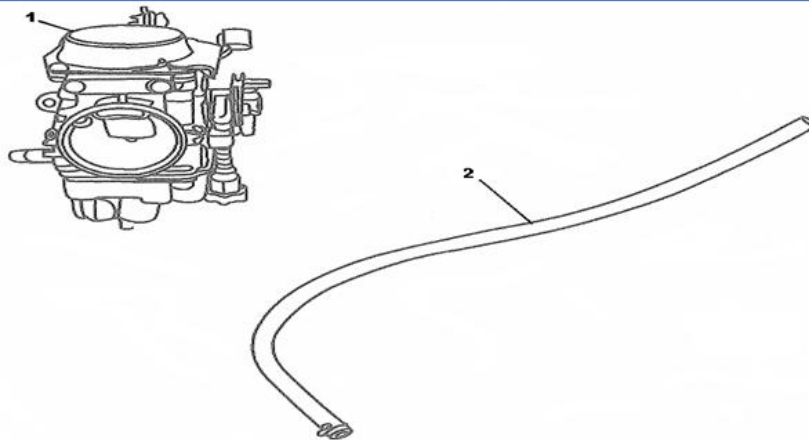
Left Crankcase [Image]



Left Crankcase

Item No	Part Number	Description	Qty
001	PX250S-569	LEFT CRANKCASE ASSY	1
002	PX250S-570	CLIP, VENT PIPE	1
003	PX250S-571	BEARING (6305/P5CS16)	1
004	PX250S-572	BEARING(6204RS)	1
005	PX250S-573	BEARING (6202Z)	1
006	PX250S-574	OIL PLATE ASSY.	1
007	PX250S-575	OIL SEAL 35 ? 52 ? 7, CRANKSHAFT	1
008	PX250S-576	OIL SEAL 20 ? 34 ? 7, COUNTER SHAFT	1
009	PX250S-577	OIL SEAL 12 ? 24 ? 10, GEAR SHIFING LEV	1
010	PX250S-578	BOLT A M8 ? 212	1
011	PX250S-579	BOLT M6 ? 40	1
012	PX250S-580	SCREW M6 ? 16	3
013	PX250S-581	BOLT M7 ? 33	1
014	PX250S-582	SEAL RING 6 ? 3	1
015	PX250S-583	ALUMINUM WASHER 6.5 ? 1 ? 12	1
016	PX250S-584	SCREW M6 ? 12	1
017	PX250S-585	OIL DRAIN PLUG M12 ? 1.5	1
018	PX250S-586	GASKET 12.5 ? 1.5 ? 20	1
019	PX250S-587	NEUTRAL SWITCH ASSY.	1
020	PX250S-588	WIRE PLATE	1

Carburetor [Image]



Carburetor

Item No	Part Number	Description	Qty
001	PX250S-589	CARBURETOR	1
002	PX250S-590	TUBE	1

Decals

Item No	Part Number	Description	Qty
001	PX250S-592	DECAL ASSEMBLY, GRAPHIC AND WARNING	1

Engine

Item No	Part Number	Description	Qty
	PX250S-593	ENGINE (250CC MOTORCYCLE)	1