



Product Information

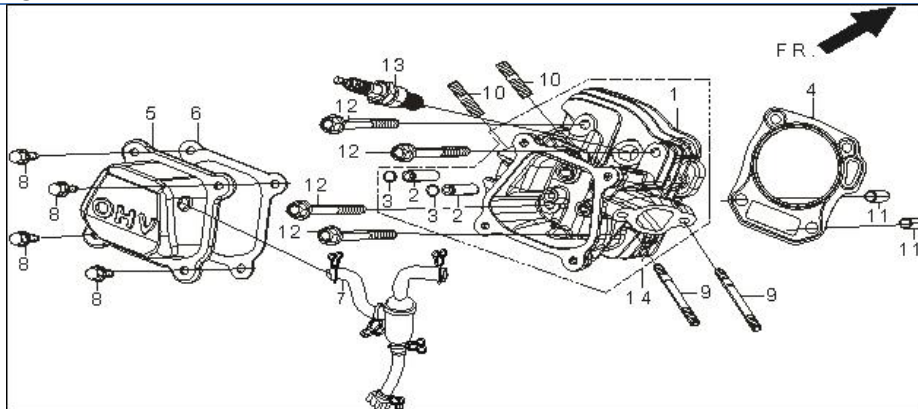
Baja Web > Product Information > Parts Lists > MINIBIKE > MB200 - Globe Mini Bike (VIN PREFIX LYOY)

MB200 - Rato Mini Bike (VIN PREFIX LYOY)

MB200 - Rato Mini Bike (VIN PREFIX LYOY)



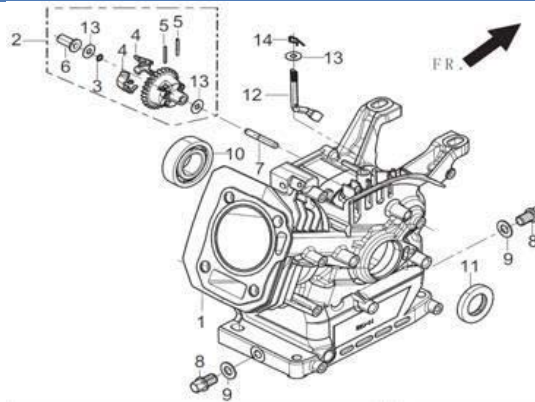
Cylinder Head [Image]



CYLINDER HEAD

| Item No | Part Number | Description | Qty |
|---------|-------------|----------------------------------|-----|
| 4 | MB200-253 | GASKET, CYLINDER HEAD | 1 |
| 5 | MB200-254 | COVER SUBASSEMBLY, CYLINDER HEAD | 1 |
| 6 | MB200-255 | GASKET, CYLINDER HEAD COVER | 1 |
| 7 | MB200-256 | TUBE, BREATHER | 1 |
| 8 | MB200-257 | BOLT | 4 |
| 9 | MB200-258 | STUD | 2 |
| 10 | MB200-259 | STUD | 2 |
| 11 | MB200-260 | PIN | 2 |
| 12 | MB200-261 | BOLT, CYLINDER HEAD | 4 |
| 13 | MB200-262 | PLUG, SPARK | 1 |
| 14 | MB200-263 | HEAD SUBASSEMBLY, CYLINDER | 1 |

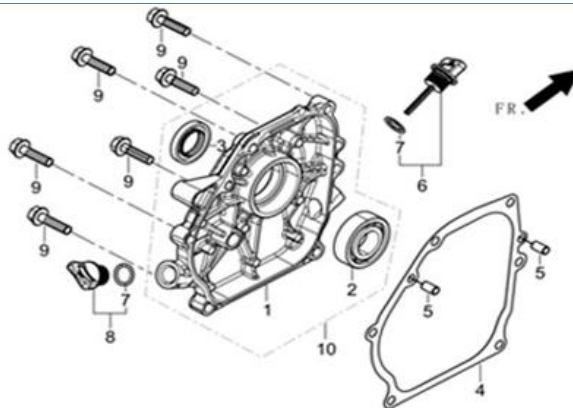
Cylinder [Image]



CYLINDER

| Item No | Part Number | Description | Qty |
|---------|-------------|-----------------------|-----|
| 1 | MB200-264 | CRANKCASE SUBASSEMBLY | 1 |
| 2 | MB200-265 | GEAR ASSY, GOVERNOR | 1 |
| 8 | MB200-266 | BOLT, DRAIN PLUG | 2 |
| 9 | MB200-267 | WASHER | 2 |
| 10 | MB200-268 | BEARING | 1 |
| 11 | MB200-269 | SEAL, OIL | 1 |
| 12 | MB200-270 | ARM, GOVERNOR | 1 |
| 13 | MB200-271 | WASHER, GOVERNOR GEAR | 1 |
| 14 | MB200-272 | PIN | 1 |

Crankcase Cover [Image]

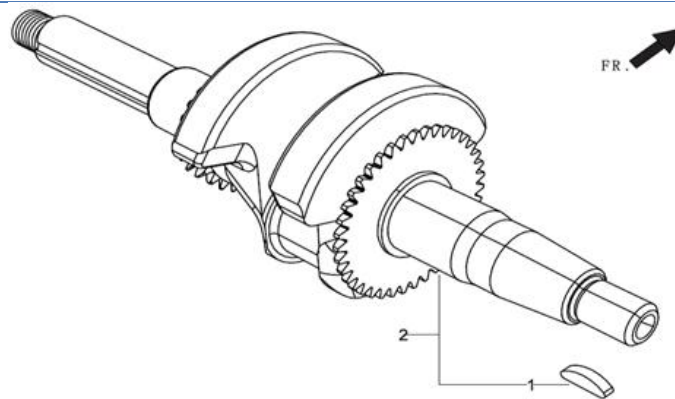


CRANKCASE COVER

| Item No | Part Number | Description | Qty |
|---------|-------------|-------------------|-----|
| 1 | MB200-273 | COVER, CRANKCASE | 1 |
| 2 | MB200-274 | BEARING | 1 |
| 3 | MB200-275 | SEAL, OIL | 1 |
| 4 | MB200-276 | GASKET, CRANKCASE | 1 |

| | | | |
|---|-----------|------------------------------|---|
| 5 | MB200-277 | PIN | 2 |
| 6 | MB200-278 | DIPSTICK SUBASSEMBLY, OIL | 1 |
| 8 | MB200-279 | PLUG SUBASSEMBLY, ENGINE OIL | 1 |
| 9 | MB200-280 | BOLT | 6 |

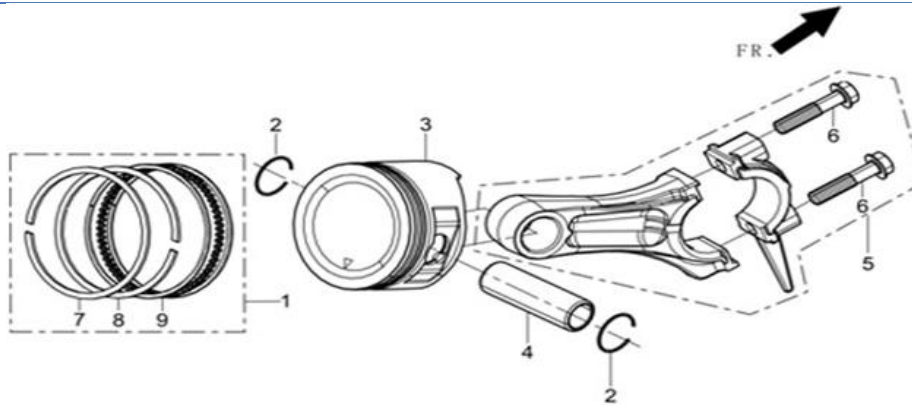
Crankshaft [Image]



CRANKSHAFT

| Item No | Part Number | Description | Qty |
|---------|-------------|------------------|-----|
| 1 | MB200-281 | CRANKSHAFT ASSY. | 1 |

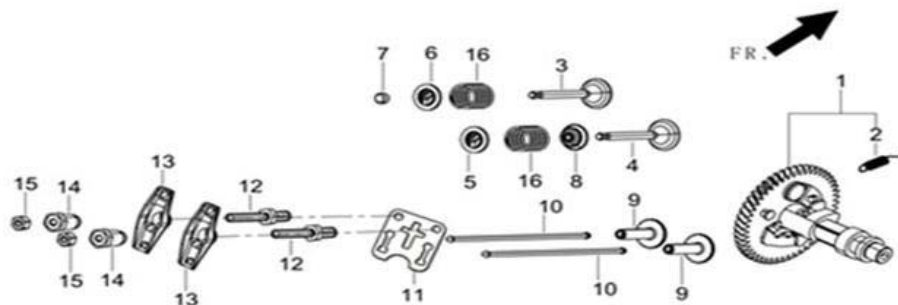
Piston [Image]



PISTON

| Item No | Part Number | Description | Qty |
|---------|-------------|------------------|-----|
| 1 | MB200-282 | SET, PISTON RING | 1 |
| 2 | MB200-283 | CLIP, PISTON PIN | 2 |
| 3 | MB200-284 | PISTON | 1 |
| 4 | MB200-285 | PIN, PISTON | 1 |
| 5 | MB200-286 | ROD, CONNECTING | 1 |

Valves [Image]

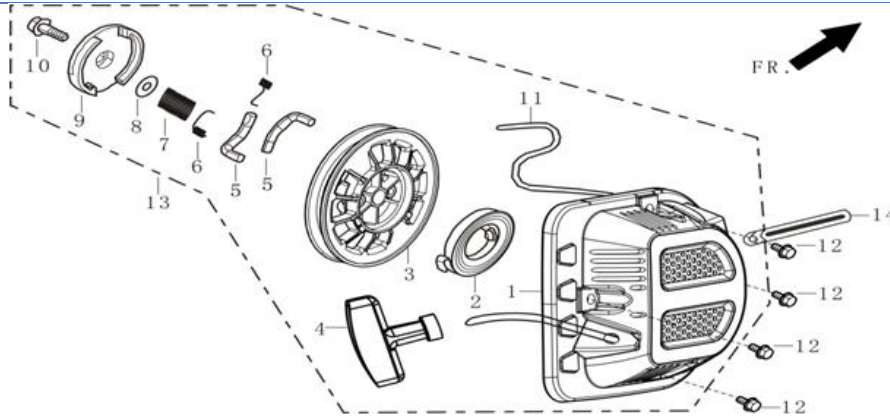


VALVES

| Item No | Part Number | Description | Qty |
|---------|-------------|----------------|-----|
| 1 | MB200-287 | CAMSHAFT ASSY. | 1 |
| 3 | MB200-288 | VALVE, EXHAUST | 1 |

| | | | |
|----|-----------|-----------------------------------|---|
| 4 | MB200-289 | VALVE, INTAKE | 1 |
| 5 | MB200-290 | SEAT, VALVE SPRING | 1 |
| 6 | MB200-291 | RETAINER, EXHAUST VALVE | 1 |
| 7 | MB200-292 | ROTATOR, VALVE | 1 |
| 8 | MB200-293 | GUIDE, SEAL | 1 |
| 9 | MB200-294 | TAPPET, VALVE | 2 |
| 10 | MB200-295 | LIFTER, VALVE | 2 |
| 11 | MB200-296 | PLATE SUBASSEMBLY, LIFTER STOPPER | 1 |
| 12 | MB200-297 | BOLT, VALVE ADJUSTING | 2 |
| 13 | MB200-298 | ROCKER, VALVE | 2 |
| 14 | MB200-299 | NUT, VALVE ADJUSTING | 2 |
| 15 | MB200-300 | NUT, VALVE LOCK | 2 |
| 16 | MB200-301 | SPRING, VALVE | 2 |

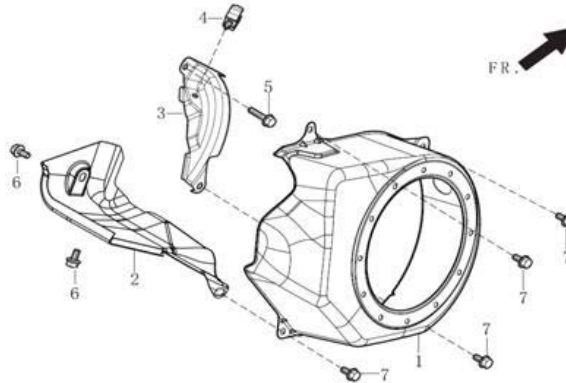
Recoil [Image]



RECOIL

| Item No | Part Number | Description | Qty |
|---------|-------------|----------------------|-----|
| 12 | MB200-302 | BOLT | 4 |
| 13 | MB200-303 | STARTER ASSY, RECOIL | 1 |
| 14 | MB200-304 | CLIP | 1 |

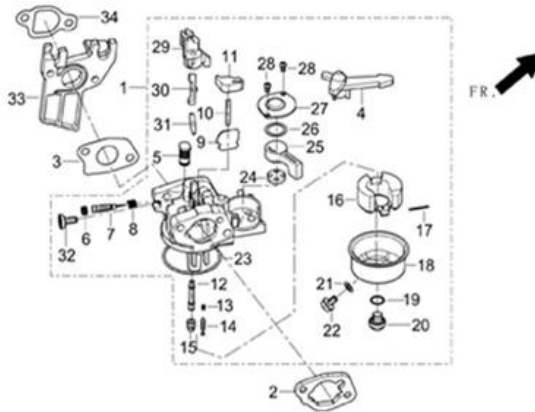
Shroud [Image]



SHROUD

| Item No | Part Number | Description | Qty |
|---------|-------------|-----------------------|-----|
| 1 | MB200-305 | SHROUD | 1 |
| 2 | MB200-306 | SHROUD, CYLINDER BODY | 1 |
| 3 | MB200-307 | SHIELD, LOWER | 1 |
| 4 | MB200-308 | COLLAR | 1 |
| 5 | MB200-309 | BOLT | 1 |
| 6 | MB200-310 | BOLT | 2 |
| 7 | MB200-311 | BOLT | 4 |

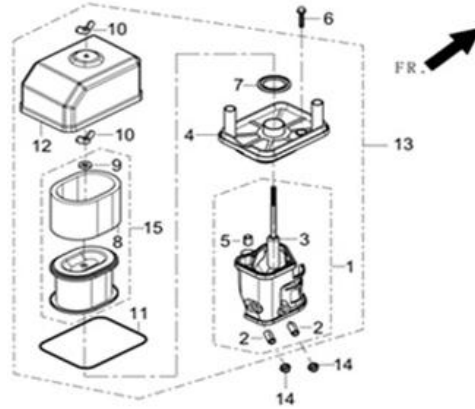
Carburetor [Image]



CARBURETOR

| Item No | Part Number | Description | Qty |
|---------|-------------|------------------------------|-----|
| 1 | MB200-312 | CARBURETOR ASSY. | 1 |
| 2 | MB200-313 | GASKET, AIR CLEANER | 1 |
| 3 | MB200-314 | GASKET, CARBURETOR | 1 |
| 33 | MB200-315 | PLATE, CARBURETOR INSULATOR | 1 |
| 34 | MB200-316 | GASKET, CARBURETOR INSULATOR | 1 |

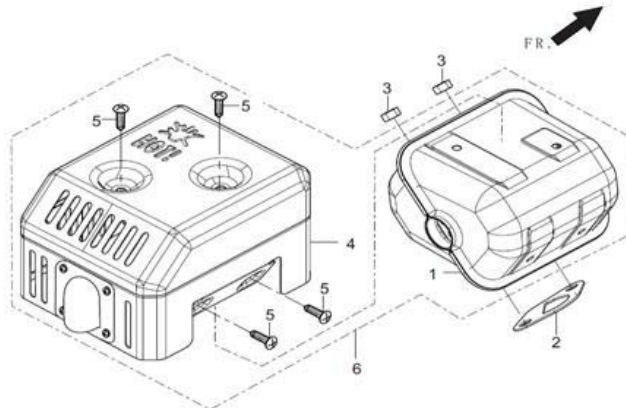
Air Cleaner [Image]



AIR CLEANER

| Item No | Part Number | Description | Qty |
|---------|-------------|--------------|-----|
| 6 | MB200-317 | BOLT | 1 |
| 13 | MB200-318 | CLEANER, AIR | 1 |
| 14 | MB200-319 | NUT | 2 |

Exhaust [Image]

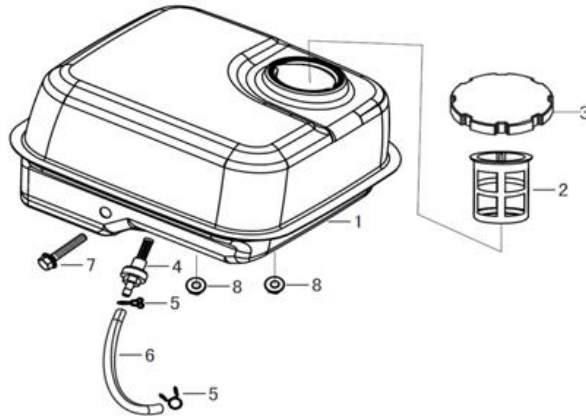


EXHAUST

| Item No | Part Number | Description | Qty |
|---------|-------------|------------------------|-----|
| 2 | MB200-320 | GASKET, EXHAUST OUTLET | 1 |

| | | | |
|---|-----------|---------------|---|
| 3 | MB200-321 | NUT | 2 |
| 6 | MB200-322 | MUFFLER ASSY. | 1 |

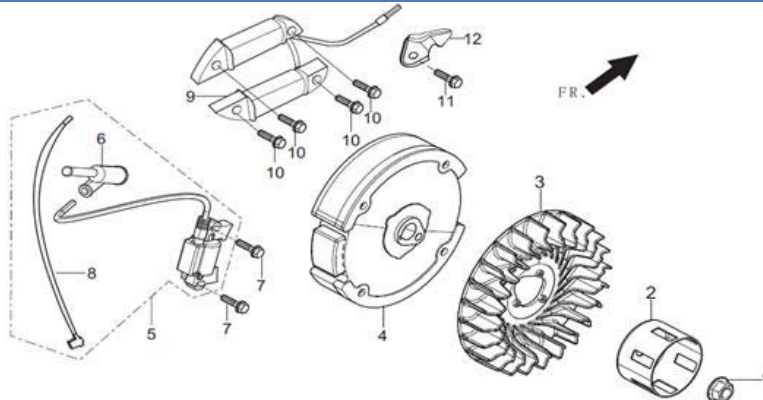
Fuel Tank [Image]



FUEL TANK

| Item No | Part Number | Description | Qty |
|---------|-------------|-----------------------------------|-----|
| 1 | MB200-321 | TANK, FUEL | 1 |
| 2 | MB200-322 | STRAINER, FUEL | 1 |
| 3 | MB200-323 | COVER, FUEL TANK | 1 |
| 4 | MB200-324 | OUTLET SUBASSEMBLY, FUEL TANK OIL | 1 |
| 5 | MB200-325 | COLLAR | 2 |
| 6 | MB200-326 | TUBE, FUEL | 1 |
| 7 | MB200-327 | BOLT | 1 |
| 8 | MB200-328 | NUT | 2 |

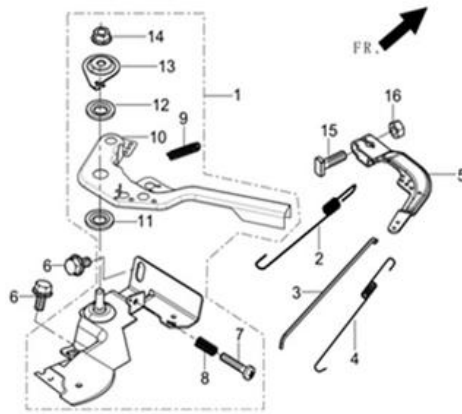
Flywheel [Image]



FLYWHEEL

| Item No | Part Number | Description | Qty |
|---------|-------------|----------------------------|-----|
| 1 | MB200-329 | NUT, FLYWHEEL | 1 |
| 2 | MB200-330 | PULLEY, STARTER | 1 |
| 3 | MB200-331 | IMPELLER | 1 |
| 4 | MB200-332 | FLYWHEEL SUBASSEMBLY | 1 |
| 5 | MB200-333 | COIL, IGNITION | 1 |
| 7 | MB200-334 | BOLT | 2 |
| 9 | MB200-335 | COIL SUBASSEMBLY, LIGHTING | 1 |
| 10 | MB200-336 | BOLT | 4 |
| 11 | MB200-337 | BOLT | 1 |
| 12 | MB200-338 | CLAMP, CHARGE COIL | 1 |

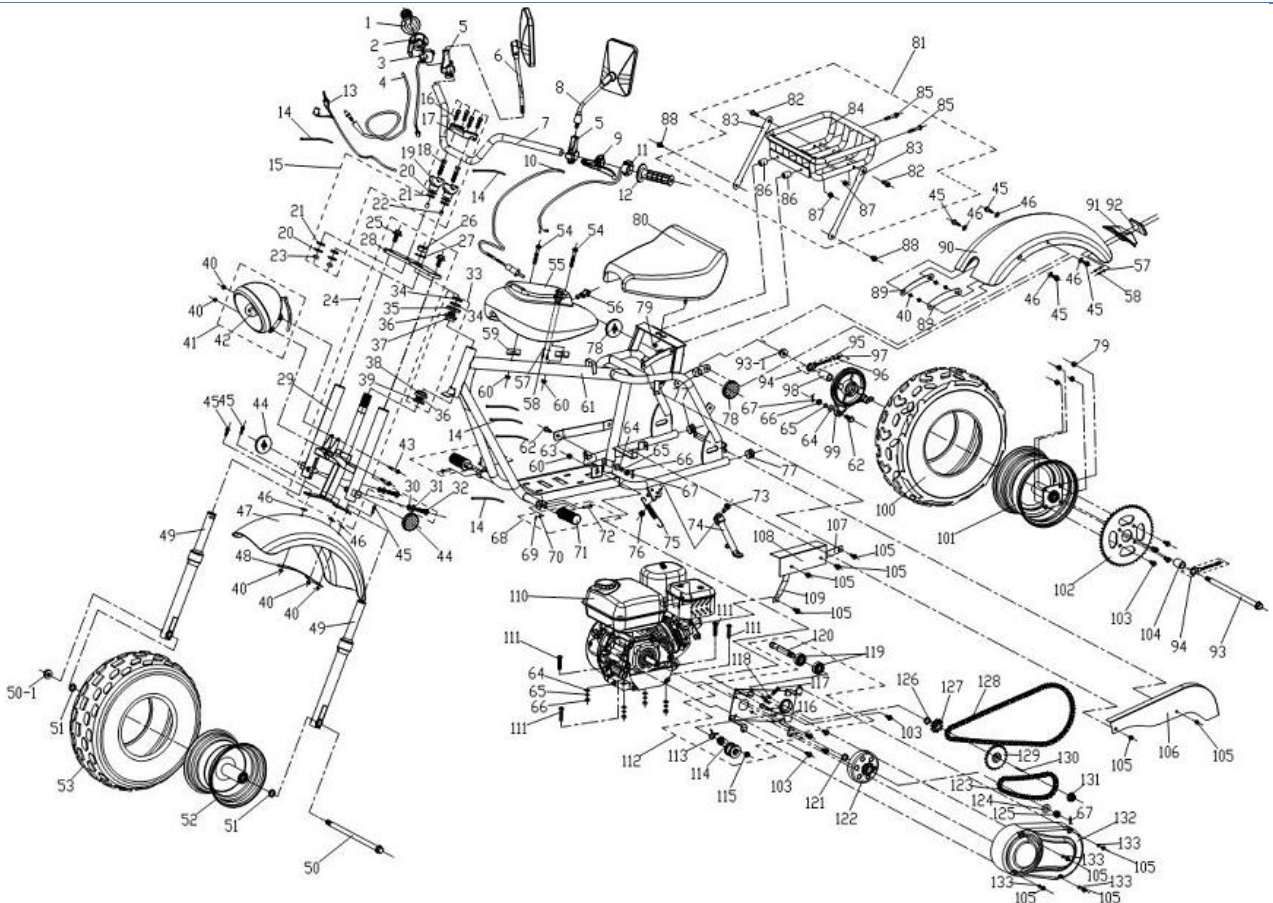
Control [Image]



CONTROL

| Item No | Part Number | Description | Qty |
|---------|-------------|----------------------------------|-----|
| 1 | MB200-339 | CONTROL ASSY, THROTTLE | 1 |
| 2 | MB200-340 | SPRING, GOVERNOR | 1 |
| 3 | MB200-341 | ROD, GOVERNOR | 1 |
| 4 | MB200-342 | SPRING, THROTTLE VALVE RETURNING | 1 |
| 5 | MB200-343 | SUPPORT SUBASSEMBLY, GOVERNOR | 1 |
| 6 | MB200-344 | BOLT | 2 |
| 15 | MB200-345 | BOLT, GOVERNOR SUPPORT | 1 |
| 16 | MB200-346 | NUT | 1 |

Frame



FRAME

| Item No | Part Number | Description | Qty |
|---------|-------------|------------------------------|-----|
| | MB200-162 | LOCK NUT,M14X1.5,FLANGE, HEX | 1 |
| | MB200-211 | LOCK NUT,M14X1.5,FLANGE, HEX | 1 |

| | | | |
|----|-----------|---|---|
| 1 | MB200-100 | RIGHT GRIP(BLACK) THROTTLE CONTROL | 1 |
| 2 | MB200-101 | HOUSING,THROTTLE CONTROL | 1 |
| 3 | MB200-102 | STOP SWITCH WITHCABLE(ON/OFF) | 1 |
| 4 | MB200-103 | CABLE,THROTTLE 1100mm | 1 |
| 5 | MB200-104 | SEAT OF REAR VIEW MIRROR M8x1.25 | 2 |
| 6 | MB200-105 | REAR VIEW MIRROR(RIGHT) | 1 |
| 7 | MB200-106 | HANDLEBAR (BLACK) | 1 |
| 7 | MB200-107 | HANDLEBAR (CHROMEPLATED) | 1 |
| 8 | MB200-108 | REAR VIEW MIRROR(LEFT) | 1 |
| 9 | MB200-109 | LEVER,LEFT BRAKE(ALUMINIUM ALLOY BLACK) | 1 |
| 9 | MB200-110 | LEVER,LEFT BRAKE(ALUMINIUM ALLOY NATURE COLOR) | 2 |
| 10 | MB200-111 | CABLR, BRAKE, 1530mm | 1 |
| 11 | MB200-112 | SWITCH OF LIGHT(BLACK,PLASTIC) | 1 |
| 12 | MB200-113 | LEFT GRIP(BLACK) | 1 |
| 13 | MB200-114 | WIRE TAIL(AC) | 1 |
| 14 | MB200-115 | STRAP(BLACK) | 6 |
| 15 | MB200-116 | BRACKET OF UPPER AND LOWER HANDLEBAR ASSEMBLY(BLACK) | 1 |
| 15 | MB200-117 | BRACKET OF UPPER AND LOWER HANDLEBAR ASSEMBLY(SILVER) | 1 |
| 24 | MB200-128 | STEERING STEM ASSEMBLY(BLACK) | 1 |
| 24 | MB200-129 | STEERING STEM ASSEMBLY(SILVER) | 2 |
| 33 | MB200-140 | BEARING ASSEMBLY | 1 |
| 41 | MB200-148 | HEADLIGHT(BLACK) | 1 |
| 41 | MB200-149 | HEADLIGHT(CHROMEPLATED) | 1 |
| 42 | MB200-150 | BULB OF HEADLIGHT | 1 |
| 43 | MB200-151 | BOLT, M6X50 FLANGE | 2 |
| 44 | MB200-152 | SIDE REFLECTOR,AMBER,DOT | 2 |
| 45 | MB200-153 | BOLT, M6X20 FLANGE | 7 |
| 46 | MB200-154 | FLAT WASHER,RUBBER,φ6xφ20x2 | 3 |
| 47 | MB200-155 | FENDER,FRONT,BLACK | 1 |
| 47 | MB200-156 | FENDER,FRONT,RED | 1 |
| 47 | MB200-157 | FENDER,FRONT,YELLOW | 1 |
| 48 | MB200-158 | BRACKET,FRONT FENDER | 1 |
| 49 | MB200-159 | FORK,FRONT(BLACK) | 2 |
| 49 | MB200-160 | FORK,FRONT(SILVER) | 2 |
| 50 | MB200-161 | SHAFT,FRONT WHEEL | 1 |
| 51 | MB200-163 | BUSHING φ15xφ25x5 | 2 |
| 52 | MB200-164 | RIM,FRONT WHEEL(BLACK) | 1 |
| 52 | MB200-165 | RIM,FRONT WHEEL(SILVER) | 2 |
| 53 | MB200-166 | TIRE,FRONT | 1 |
| 54 | MB200-167 | BOLT, M8X55 FLANGE,HEX | 2 |
| 55 | MB200-168 | TANK,DECORATIVE,BLACK | 1 |
| 55 | MB200-169 | TANK,DECORATIVE,RED | 1 |
| 55 | MB200-170 | TANK,DECORATIVE,YELLOW | 1 |
| 56 | MB200-171 | LOCK OF DECORATIVE TANK | 1 |
| 57 | MB200-172 | WASHER, FLAT | 4 |
| 58 | MB200-173 | SCREW ST3.5x12 | 4 |
| 59 | MB200-174 | RUBBER WASHER, φ 10x20x30x2.5, SQUARE | 2 |
| 60 | MB200-175 | NUT, M8 FLANGE | 2 |
| 61 | MB200-176 | FRAME(BLACK, POWER COAT) | 1 |
| 62 | MB200-177 | BOLT WITH HOLE, M8X25,FLANGE | 2 |
| 63 | MB200-178 | BRAKE POLE(BLACK) | 1 |
| 64 | MB200-179 | WASHER, FLAT, φ 8 | 6 |
| 65 | MB200-180 | SPRING WASHER φ 8 | 6 |
| 66 | MB200-181 | NUT,M8,HEX | 6 |
| 67 | MB200-182 | HITCH PIN, φ 2.5x25 | 3 |
| 68 | MB200-183 | FOOT REST ASSEMBLY | 2 |
| 73 | MB200-188 | STEP BOLT, M10x35-φ11x15 | 1 |
| 74 | MB200-189 | KICKSTAND(BLACK) | 1 |
| 75 | MB200-190 | SPRING,KICKSTAND,φ12.5x93x130-180° | 1 |
| 76 | MB200-191 | NUT,M10,HEX | 1 |
| 77 | MB200-192 | CAP, RUBBER, φ 25x22x20-4 | 2 |

| | | | |
|-----|-----------|---------------------------------------|----|
| 78 | MB200-193 | REAR SIDE REFLECTOR | 2 |
| 79 | MB200-194 | LOCK NUT,M8,FLANGE | 5 |
| 80 | MB200-195 | SEAT,BLACK | 1 |
| 81 | MB200-196 | REAR STORAGE RACK ASSEMBLY(BLACK) | 1 |
| 82 | MB200-197 | BOLT M8X30, FLANGE | 2 |
| 83 | MB200-198 | BRACKET OF REAR RACK(BLACK) | 2 |
| 84 | MB200-199 | REAR STORAGE RACK | 1 |
| 85 | MB200-200 | BOLT M8X45, FLANGE | 2 |
| 86 | MB200-201 | SPACER | 3 |
| 87 | MB200-202 | NUT M8, FLANGE | 2 |
| 88 | MB200-203 | BOLT M8X16, FLANGE | 2 |
| 89 | MB200-204 | BRACKET,REAR FENDER(BLACK) | 2 |
| 90 | MB200-205 | REAR FENDER(BLACK) | 1 |
| 90 | MB200-206 | REAR FENDER(RED) | 1 |
| 90 | MB200-207 | REAR FENDER(YELLOW) | 1 |
| 91 | MB200-208 | BRACKET OF REAR REFLECTOR | 1 |
| 92 | MB200-209 | REAR REFLECTOR,RED,DOT | 1 |
| 93 | MB200-210 | REAR SHAFT,φ15x325 | 1 |
| 94 | MB200-212 | REAR AXLE ADJUSTING ASSEMBLY | 2 |
| 95 | MB200-213 | SPRING WASHER | 2 |
| 96 | MB200-214 | WASHER, FLAT | 2 |
| 97 | MB200-215 | NUT, M6,HEX | 2 |
| 98 | MB200-216 | BUSHING,φ15xφ25x46,RIGHT REAR WHEEL | 1 |
| 99 | MB200-217 | REAR BRAKE ASSEMBLY(SILVER) | 1 |
| 100 | MB200-218 | TIRE,REAR 19x7-8 | 1 |
| 101 | MB200-219 | REAR RIM(BLACK) | 1 |
| 101 | MB200-220 | REAR RIM(SILVER) | 2 |
| 102 | MB200-221 | SPROCKET,50 TEETH | 1 |
| 103 | MB200-222 | BOLT,M8x20, HEX, FLANGE | 9 |
| 104 | MB200-223 | BUSHING,φ15xφ25x36, LEFT REAR WHEEL | 1 |
| 105 | MB200-224 | BOLT, M6×10, HEX, FLANGE | 10 |
| 106 | MB200-225 | CHAIN COVER(CHROMEPLATED) | 1 |
| 107 | MB200-226 | SHORT BRACKET OF EXHAUST COVER(BLACK) | 1 |
| 108 | MB200-227 | EXHAUST COVER(BLACK) | 1 |
| 109 | MB200-228 | LONG BRACKET OF EXHAUST COVER(BLACK) | 1 |
| 110 | MB200 | ENGINE | 1 |
| 111 | MB200-230 | BOLT,M8x40, HEX, FLANGE(FT) | 4 |
| 112 | MB200-231 | JACKSHAFT ASSEMBLY | 1 |
| 121 | MB200-240 | BUSH OF CLUTCH,φ19.5xφ25x13 | 1 |
| 122 | MB200-241 | CLUTCH | 1 |
| 123 | MB200-242 | CHAIN(SHORT) | 1 |
| 124 | MB200-243 | WASHER FLAT,φ12 | 1 |
| 125 | MB200-244 | BOLT M12x1.25x12,HEX WITH SLOT | 1 |
| 126 | MB200-245 | JACKSHAFT SHAFT BUSHING,φ18xφ22x7 | 1 |
| 127 | MB200-246 | SPROCKET, 10 TEETH | 1 |
| 128 | MB200-247 | CHAIN(LONG) | 1 |
| 129 | MB200-248 | SPROCKET 20 TEETH | 1 |
| 130 | MB200-249 | KEY,5x5x30 | 1 |
| 131 | MB200-250 | LOCK NUT,M16×1.5,HEX, FLANGE | 1 |
| 132 | MB200-251 | CLUTCH COVER | 1 |
| 133 | MB200-252 | SPRING WASHER, φ 6 | 4 |